

landowners

Services for Farmers, Ranchers and Other Large Landowners

WindLogics works with landowners, community-based energy developers, financial institutions and other renewable energy stakeholders to evaluate properties for wind energy development.

Our Viewpoint™ wind resource assessment services and Valuepoint™ due diligence analysis meld all available long-term meteorological data—as much as 60 years' worth—in combination with any on-site met tower data to thoroughly examine wind resources.

A variety of wind resource assessments are available to you, and our experts will work with you to determine the services that are most appropriate for your project.

REGIONAL PROSPECTING STUDIES

These studies provide accurate maps depicting long-term wind speed and wind energy characteristics at turbine hub height. Often requested in early stages of wind farm development, these studies overcome the limitations of generally available maps, which are often based on limited data interpolated to cover large areas.

DISCOVERY STUDY

The Discovery Study provides a scientific evaluation of an area of interest, including both an appraisal of wind characteristics and recommendations for next steps in the development process. This fast-turnaround study focuses on two critical resource attributes: estimated wind speed and long-term wind variability. To provide these preliminary recommendations, the WindLogics science team reviews several data sources (including our exclusive weather data archives), incorporates customer-provided information, and researches regional meteorology and relevant publicly available information.

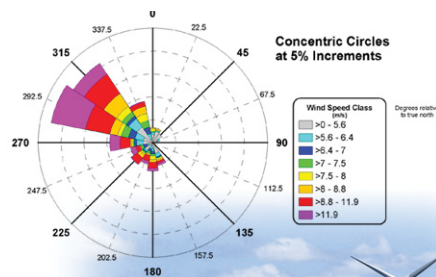
POINT STUDIES/ENHANCED POINT STUDIES

Point Studies go beyond the Discovery Study to provide a more detailed look at potential wind energy projects. Designed for landowners, developers and financiers, Point Studies deliver 40-year annual average wind speeds and energy production predictions for a specific location and hub height. With these results, you can proceed to development, direct additional wind studies or eliminate the site from further consideration.

Prepared either in advance of on-site data collection or in combination with existing data, these wind studies offer several advantages:

- Long-term data analysis – Compared to others, Viewpoint studies employ more data and at higher resolution to provide you with reliable decision support.
- Effects of regional features – We examine local geographic attributes, such as topography, weather and climate, that influence your wind resource.
- Fast turnaround and cost savings compared to the tower-data-only approach – We quickly provide you with a customized report personally prepared and reviewed by our inhouse meteorologists.

Consider the Viewpoint Point Study when you are looking for the time-tested and most accurate initial assessment available today.



DETAILED SITE ASSESSMENT

Detailed Site Assessments provide a comprehensive analysis across your entire wind project site. These studies are often requested once a site is secured and stakeholders are obtaining financing. Like the Point Study, it delivers long-term wind speeds and energy production to overcome concerns about limited met tower data or questionable long-term reference data. In addition, it provides this three-dimensional analysis across the entire site, including detailed site visualizations.

These studies reduce the expense and time of erecting additional met towers, with the advantage of high-precision GIS-based maps of wind speed and power production to guide stakeholder discussions and direct additional investigation, as needed.

HOURLY DATA NORMALIZED TO 40-YEAR AVERAGES

WindLogics responds to the specific needs of energy and financial analysts with hourly data prepared for a specific point of study. Using the WindLogics Virtual Tower approach, we provide a full year of accurate hourly data (8,760 hours) on wind speed, direction, temperature, and turbine-specific wind energy production. This methodology avoids the risk of inaccurate reference data by applying WindLogics' patented normalization process using a full 40 years of accurate weather data.

TOWER DATA MANAGEMENT AND ANALYSIS

WindLogics provides Met Tower Data Management and Analysis during initial data collection phases and as part of ongoing met tower management for operating wind farms. Landowners, developers and utilities know met tower anemometers and sensors can be inoperable and data compromised for weeks or months before noticed. Our Viewpoint data management services provide ongoing monitoring of met tower data collection to identify potential concerns before significant amounts of data are lost or compromised.

DUE DILIGENCE ANALYSIS

Due Diligence Studies provide a detailed understanding of the long-term wind resource and its effect on the financial feasibility of a project. Landowners, developers and financiers use these studies during initial financing or refinancing to make sound decisions based on long-term weather characteristics.

By leveraging the value of 40 years of actual weather data through our patented approach, these Valuepoint studies reduce the uncertainty associated with wind variability. This process delivers the true distributions of wind speed and direction and thus energy production over a full 40 years. With this analysis, wind project stakeholders can move forward with confidence, knowing they have the best long-term wind understanding available today.

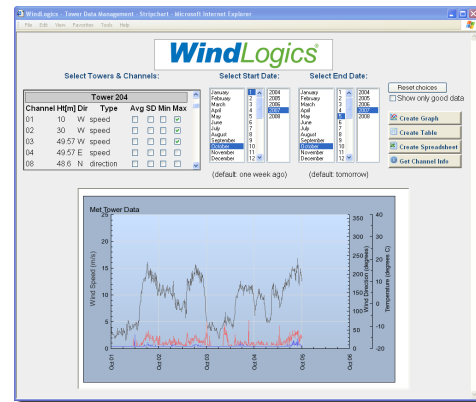
WINDLOGICS AT YOUR SERVICE

You can trust WindLogics for reliable and confidential wind study services. We have worked with landowners – large and small – across the country and around the globe. Our experienced meteorologists have accurately evaluated wind regimes for hundreds of locations in a variety of terrain. Every project is different in its requirements, but each is treated with same high level of integrity and scientific excellence.

Now is the time to learn more about how a wind energy project can provide additional long-term revenue from your land assets. For more information on WindLogics services, please visit www.WindLogics.com. or contact us directly and let us know how we can help.

Larry Sinesio
Vice President, Sales and Marketing
651.556.4271
larrys@windlogics.com

Gary Pietruszewski
Sales Director
651.556.4226
garyp@windlogics.com



1021 Bandana Blvd. East, Suite 111
St. Paul, MN 55108 USA
www.WindLogics.com

651.556.4200 TEL
651.556.4210 FAX
sales@windlogics.com